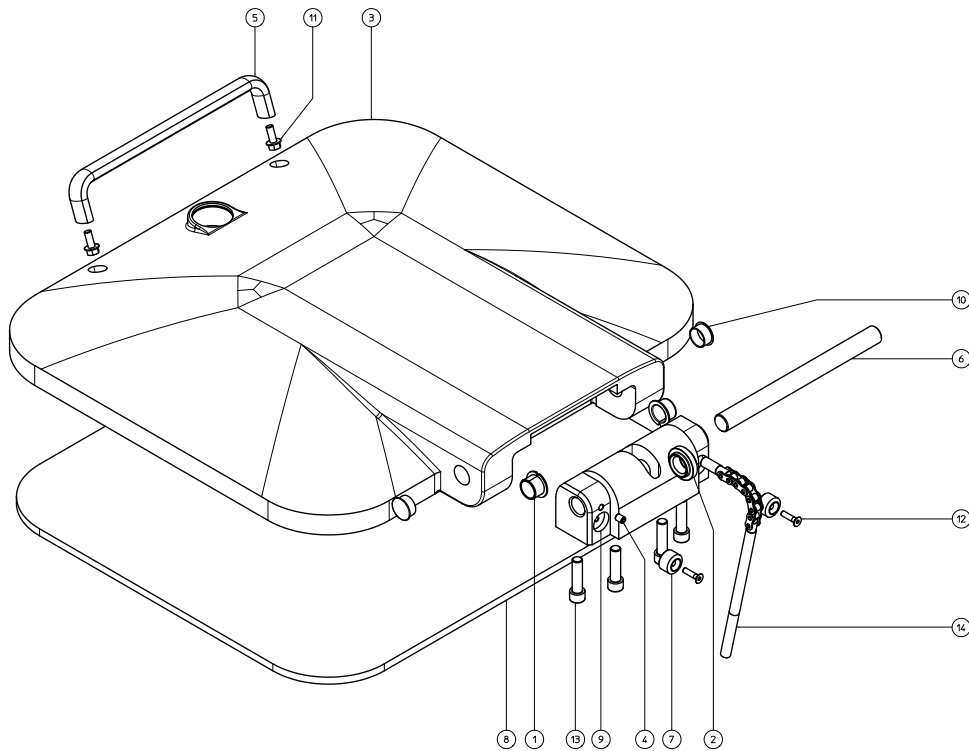


SPARE PARTS MPB AUT

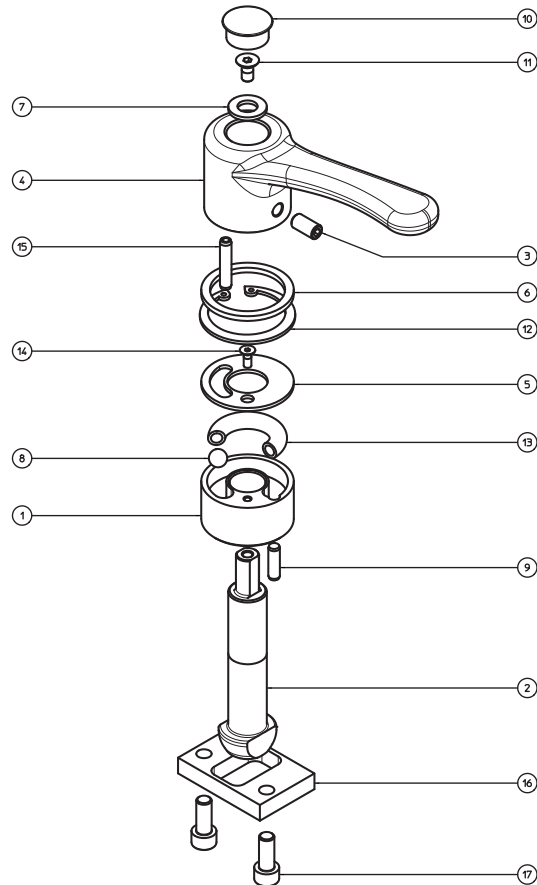
COVER GROUP COD. CP000005



| POSITION | QUANTITY | CODE | DESCRIPTION |
|----------|----------|----------|-----------------------|
| 1 | 2 | 18072216 | LATCH INSERT KF 22 15 |
| 2 | 1 | 33800031 | CHAIN GUIDE |
| 3 | 1 | 35050004 | COVER |
| 4 | 1 | 37010810 | SCREW M8X10 |
| 5 | 1 | 43712630 | HANDLE COVER |
| 6 | 1 | 49410030 | COVER PIN |
| 7 | 2 | 50850029 | STOPPER |
| 8 | 1 | 50850039 | COVER PLATE |
| 9 | 1 | 61900041 | LID SUPPORT |
| 10 | 2 | 64920008 | PLUG |
| 11 | 2 | 69210820 | SCREW M8X20 ZINC. |
| 12 | 2 | 69270625 | SCREW M6X25 INOX |
| 13 | 4 | 69161245 | SCREW M12X45 ZINC. |
| 14 | 1 | 18100005 | BALANCE CHAIN |

SPARE PARTS MPB AUT

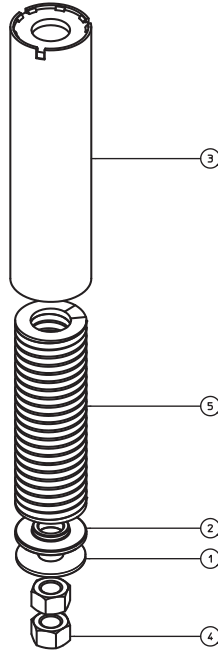
COVER LID **COD. AG000006**



| POSITION | QUANTITY | CODE | DESCRIPTION |
|----------|----------|----------|-------------------------|
| 1 | 1 | 17910008 | LATCH LID COVER |
| 2 | 1 | 35440011 | LID COVER |
| 3 | 1 | 37040815 | SCREW M08X16 |
| 4 | 1 | 43700006 | LID HANDLE |
| 5 | 1 | 58910008 | WASHER LID COVER |
| 6 | 1 | 58920004 | WASHER HANDLE COVER |
| 7 | 1 | 59151020 | WASHER D. 10 ZINC. |
| 8 | 1 | 61610002 | BALL D. 9,52 |
| 9 | 1 | 63030620 | RECTIFIED PLUG D.6X20 |
| 10 | 1 | 64920002 | PLUG |
| 11 | 1 | 69240612 | SCREW M6X12 ZINC. |
| 12 | 1 | 14120047 | SEEGER RING D.47 |
| 13 | 1 | 44820027 | COMPRESSION SPRING C027 |
| 14 | 1 | 69270410 | SCREW M4X10 INOX |
| 15 | 1 | 63080630 | PLUG D.6X30 |
| 16 | 1 | 49660018 | HOOK CONNECTION |
| 17 | 2 | 69160820 | SCREW M8X20 ZINC. |

SPARE PARTS MPB AUT

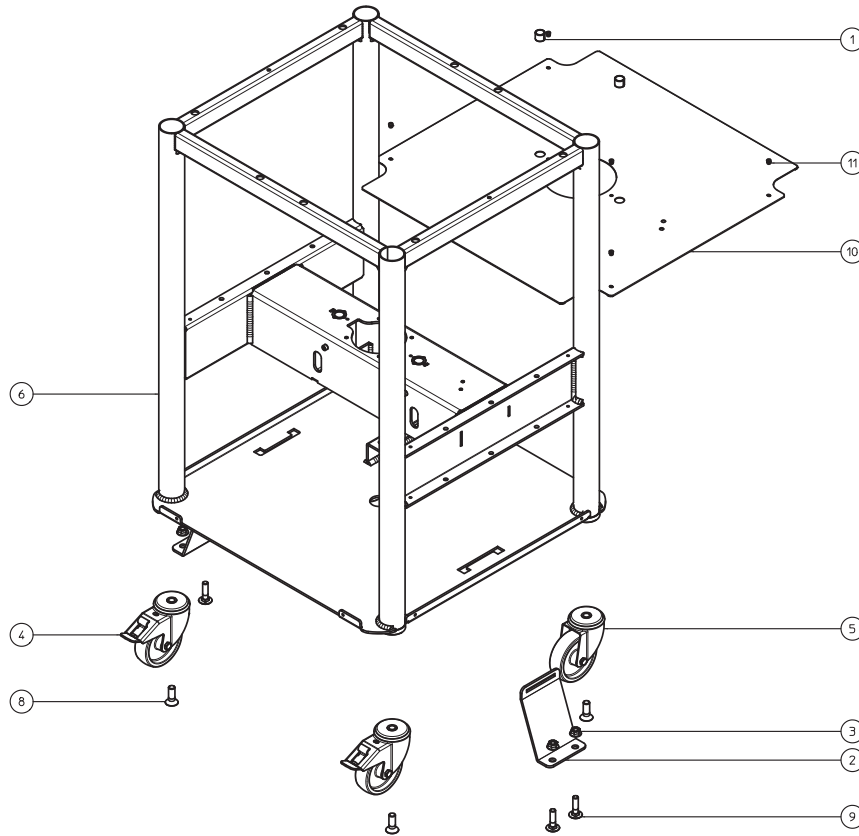
 COVER BALANCING **COD. BM000002**



| POSITION | QUANTITY | CODE | DESCRIPTION |
|----------|----------|----------|---------------------------|
| 1 | 1 | 59091236 | WASHER D12X36 SP. 2 ZINC. |
| 2 | 1 | 58920002 | LOWER BALANCING WASHER |
| 3 | 1 | 66880053 | PIPE |
| 4 | 2 | 30131201 | NUT M12 ZINC. |
| 5 | 1 | 44873818 | BLU SPRING D38X180 |

SPARE PARTS MPB AUT

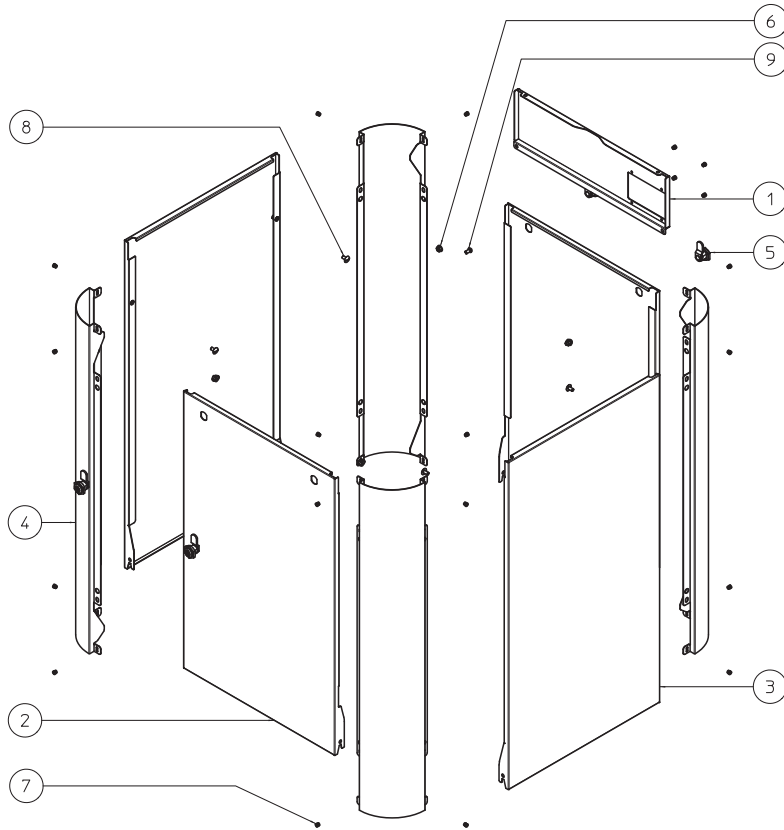
FRAME COD. TL000006



| POSITION | QUANTITY | CODE | DESCRIPTION |
|----------|----------|----------|----------------------|
| 1 | 2 | 18061615 | LATCH INSERT KU 1615 |
| 2 | 2 | 20120281 | MOUNTING BRACKET |
| 3 | 4 | 30211001 | NUT M10 ZINC. |
| 4 | 2 | 59860003 | CASTER WITH BRAKE |
| 5 | 2 | 59860004 | CASTER WITHOUT BRAKE |
| 6 | 1 | 60010040 | FRAME |
| 7 | 2 | 69160612 | SCREW M6X12 ZINC. |
| 8 | 4 | 69241235 | SCREW M12X35 ZINC. |
| 9 | 4 | 69251040 | SCREW M10X40 ZINC. |
| 10 | 1 | 20120302 | DEBRIS CATCH PLATE |
| 11 | 6 | 58250410 | ALUMINUM RIVET |

SPARE PARTS MPB AUT

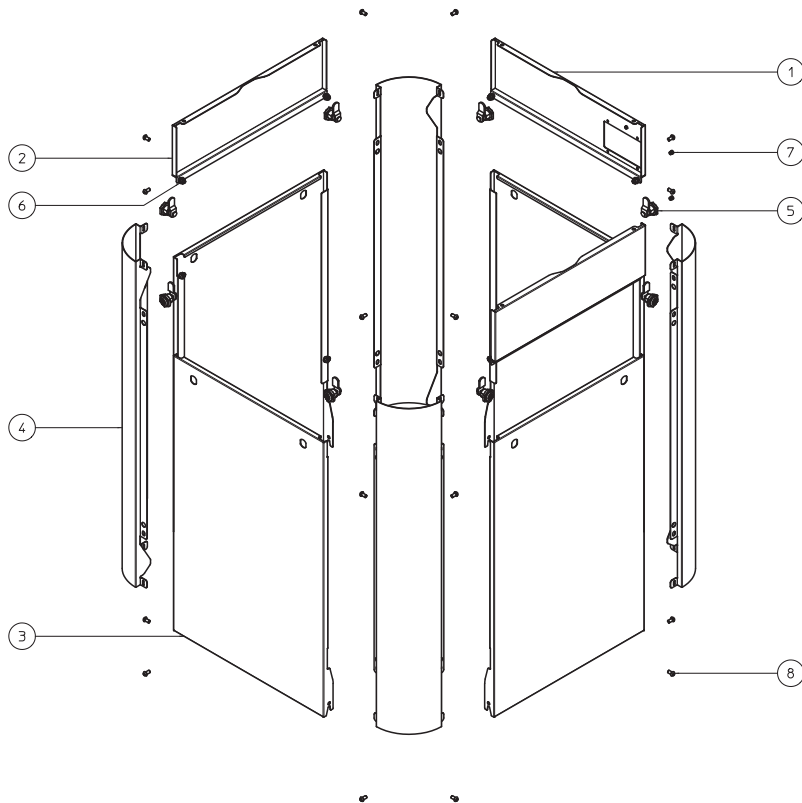
STANDARD CASING **COD. CR000003**



| POSITION | QUANTITY | CODE | DESCRIPTION |
|----------|----------|----------|---------------------|
| 1 | 1 | 20120299 | POWER SUPPLY PANNEL |
| 2 | 2 | 20120296 | REMOVABLE PANNEL |
| 3 | 2 | 20120305 | LATERAL PANNEL |
| 4 | 4 | 20120297 | ANGULAR PANNEL |
| 5 | 4 | 22803621 | LOCK |
| 6 | 4 | 30190601 | NUT M6 ZINC. |
| 7 | 20 | 58250410 | ALUMINUM RIVET |
| 8 | 4 | 69100612 | SCREW M6X12 ZINC. |

SPARE PARTS MPB AUT

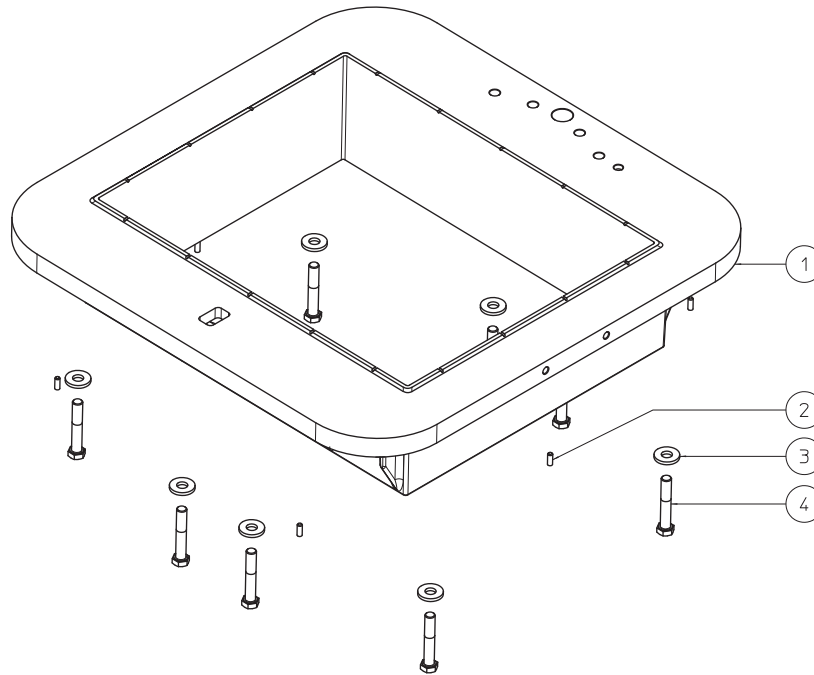
4 REMOVABLE PANNELS CASING **COD. CR000005**



| POSITION | QUANTITY | CODE | DESCRIPTION |
|----------|----------|----------|-------------------------|
| 1 | 1 | 20120299 | POWER SUPPLY PANNEL |
| 2 | 2 | 20120300 | FIX LATERAL PANNEL |
| 3 | 4 | 20120296 | REMOVABLE PANNEL |
| 4 | 4 | 20120297 | ANGULAR PANNEL |
| 5 | 8 | 22803621 | LOCK |
| 6 | 8 | 30190601 | NUT M6 ZINC. |
| 7 | 20 | 58250410 | ALUMINUM RIVET |
| 8 | 8 | 69180612 | SCREW TCBEI M6X12 ZINC. |

SPARE PARTS MPB AUT

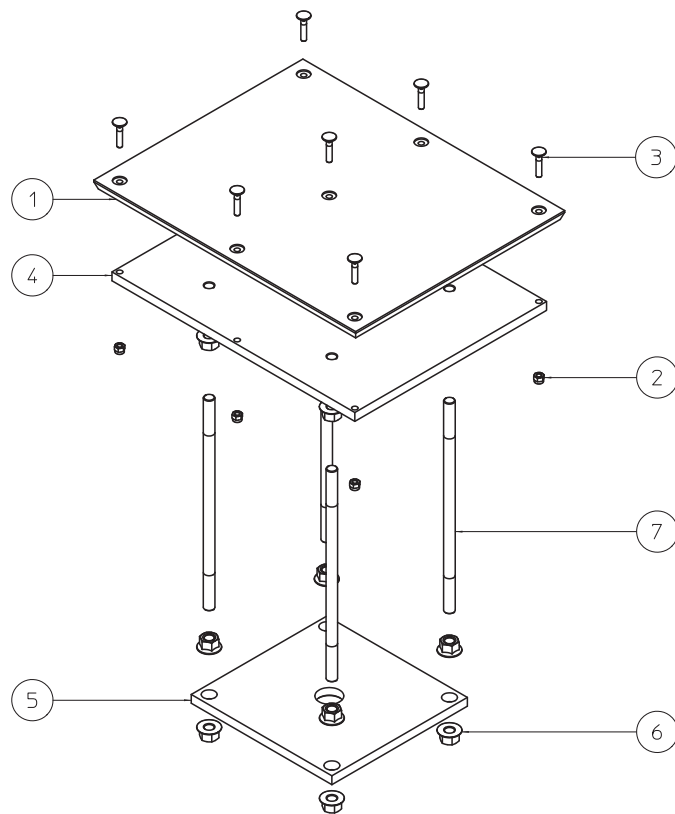
■ RECTANGULAR BASIN GROUP **COD. VS000007**



| POSITION | QUANTITY | CODE | DESCRIPTION |
|----------|----------|----------|----------------------------|
| 1 | 1 | 35150008 | RECTANGULAR BASIN |
| 2 | 6 | 37040616 | SCREW M06X16 |
| 3 | 8 | 59091230 | WASHER D.12X30 SP. 4 ZINC. |
| 4 | 8 | 69201270 | SCREW M12X70 ZINC. |

SPARE PARTS MPB AUT

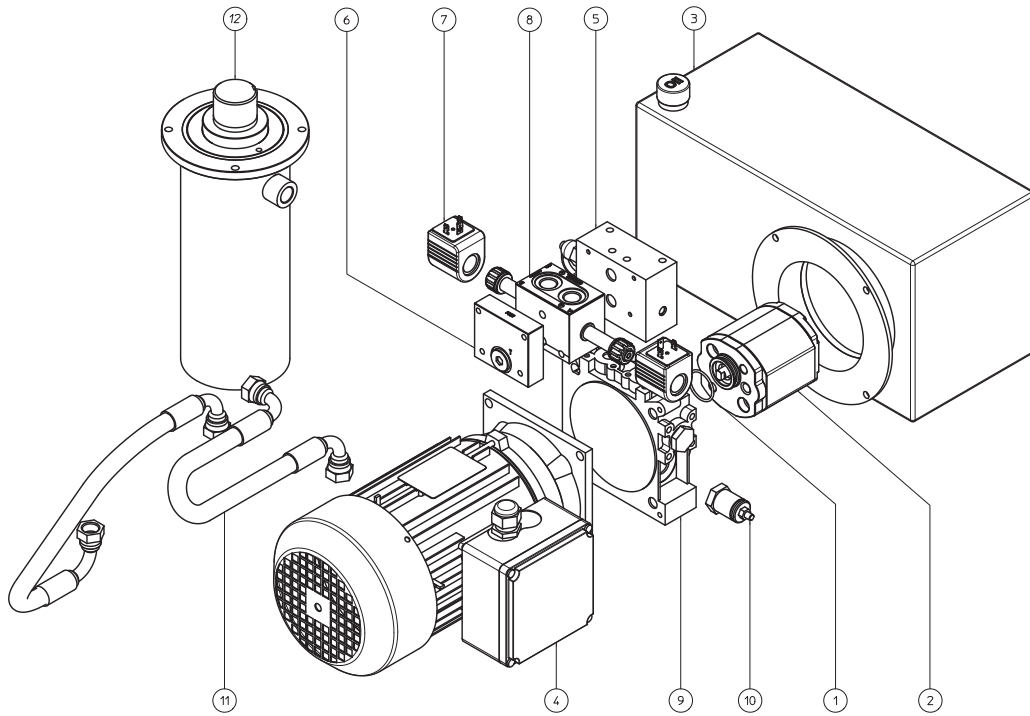
PRESSED GROUP COD. TG000021



| POSITION | QUANTITY | CODE | DESCRIPTION |
|----------|----------|----------|--------------------------------|
| 1 | 1 | 50850032 | PRESS PLATES 512X409 mm |
| 2 | 7 | 30080801 | SELFLOCKING NUT M8 ZINC. |
| 3 | 7 | 69010001 | FIXING SCREW |
| 4 | 1 | 49420023 | SUPPORT FOR PRESS PLATE |
| 5 | 1 | 49420024 | PRESS SUPPORT GUIDE ROD PLATE |
| 6 | 12 | 30191601 | NUT M16 ZINC. |
| 7 | 4 | 65810014 | PRESS SUPPORT PLATE GUIDE RODS |

SPARE PARTS MPB AUT

HYDRAULIC SYSTEM GROUP

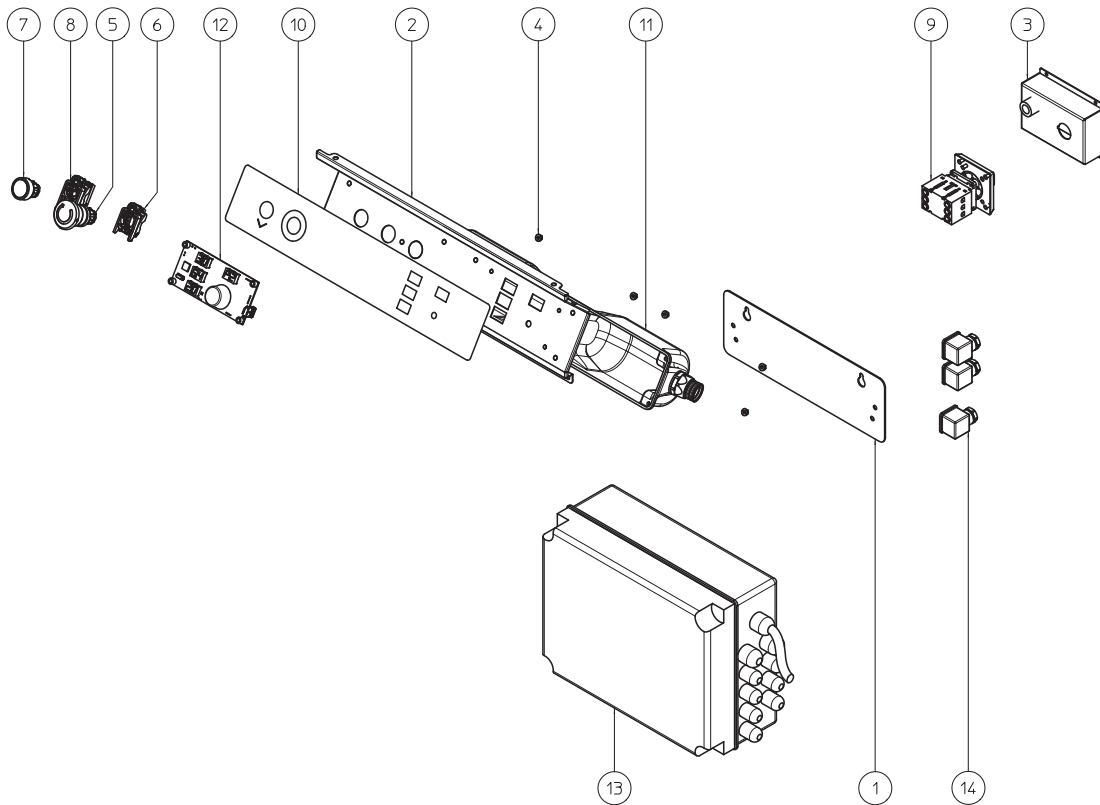


MADE IN ITALY

| POSITION | QUANTITY | CODE | DESCRIPTION |
|----------|----------|----------|--|
| 1 | 1 | 38693106 | OR SEAL 3106 |
| 2 | 1 | 50970002 | PUMP MOD. K1P D 15 G P199 |
| 2 | 1 | 50970003 | PUMP MOD. "T" PHC 1-6,0 X MC (MOTOR MONOPHASE) |
| 3 | 1 | 60060004 | OIL TANK |
| 4 | 1 | 45200002 | MOTOR THREE PHASES 230-400/3/50-60 STANDARD |
| 4 | 1 | 45220002 | MOTOR THREE PHASES UL 230/3/60 |
| 4 | 1 | 45120002 | MOTOR MONOPHASE UL 230/1/60 |
| 4 | 1 | 45150002 | MOTOR MONOPHASE UL 110/1/60 |
| 5 | 1 | 28320002 | INTERFACE BLOCK |
| 6 | 1 | 28320004 | BLOCK FU31 |
| 7 | 2 | 17500001 | COIL A0924DDC STANDARD |
| 7 | 1 | 17500004 | COIL A0924VDC-27W M UL |
| 8 | 1 | 31770002 | PARALLEL COMPONIBLE DISTRIBUTOR |
| 9 | 1 | 28320006 | HYDRAULIC BODY |
| 10 | 1 | 30900001 | VALVLE |
| 11 | 2 | 66950003 | PIPE R1T 3/8" F90+F90 |
| 12 | 1 | 23700004 | HYDRAULIC CYLINDER |

SPARE PARTS MPB AUT

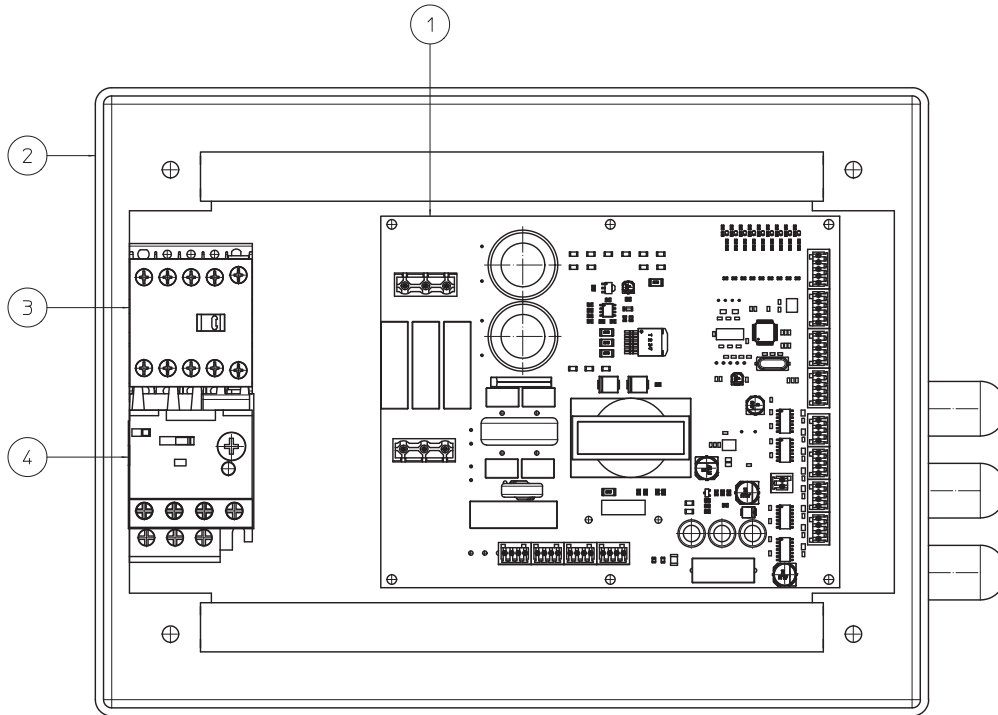
ELECTRICAL GROUP ■



| POSITION | QUANTITY | CODE | DESCRIPTION |
|----------|----------|----------|---------------------------------------|
| 1 | 1 | 20100417 | FIXING PLATE |
| 2 | 1 | 20120304 | CONTROL PANEL PLATE |
| 3 | 1 | 20120324 | POWER SUPPLY COVER |
| 4 | 6 | 30190401 | NUT M4 ZINC. |
| 5 | 1 | 53800001 | EMERGENCY STOP BUTTON |
| 6 | 1 | 53800014 | EMERGENCY STOP BUTTON SUPPORT |
| 7 | 1 | 53800017 | GREEN LIGHT |
| 8 | 1 | 53800018 | LID LIGHT SUPPORT |
| 9 | 1 | 53800033 | MAIN SWITCH |
| 10 | 1 | 60850007 | SERIGRAPHY |
| 11 | 1 | 65610001 | CONTROL PANEL REAR COVER |
| 12 | 1 | 49200023 | PLC BOARD PANEL |
| 13 | 1 | 53800051 | PLASTIC ELECTRICAL BOX (STANDARD) |
| 13 | 1 | 53800045 | PAINTED STEEL ELECTRICAL BOX (UL) |
| 14 | 2 | 25300002 | ELECTRICAL CONNECTOR CNT 182 PG09 H12 |

SPARE PARTS MPB AUT

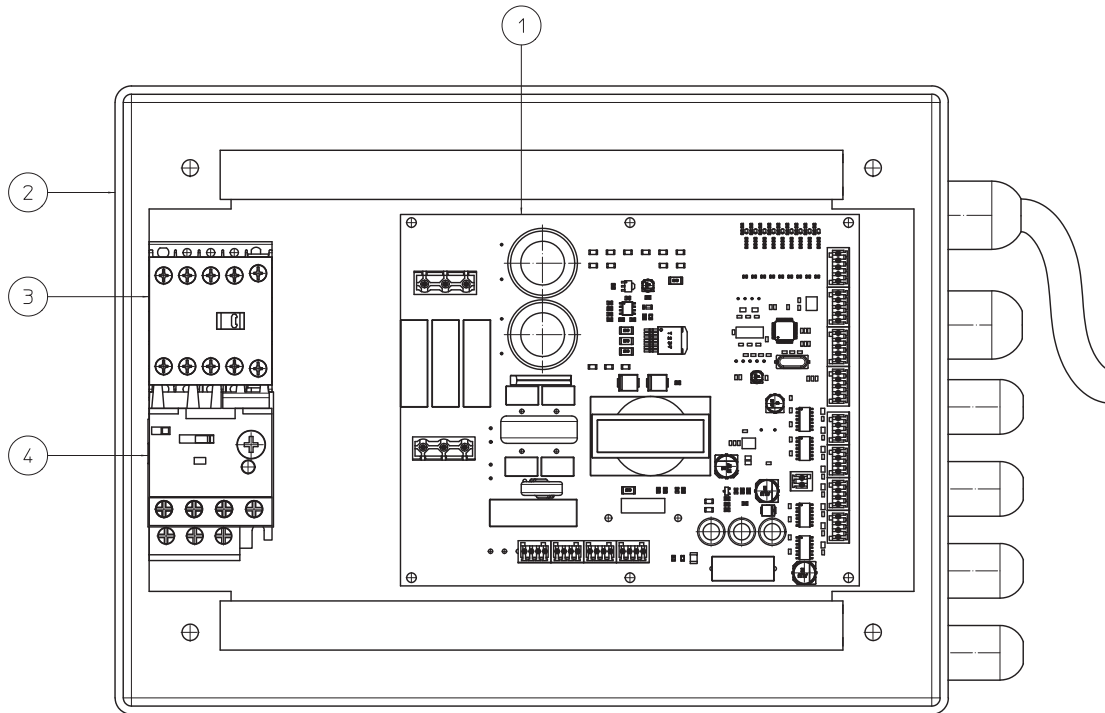
 ELECTRICAL BOX UL/CSA



| POSITION | QUANTITY | CODE | DESCRIPTION |
|----------|----------|----------|---|
| 1 | 1 | 49200025 | PC BOARD |
| 2 | 1 | 53800045 | PAINTED STEEL ELECTRICAL BOX (UL) |
| 3 | 1 | 65050001 | CONTACTOR |
| 4 | 1 | 66000017 | THERMAL OVERLOAD 10/14 A - 110 V 1 PH |
| 4 | 1 | 66000018 | THERMAL OVERLOAD 5,5/8 A - 230 V 1 PH |
| 4 | 1 | 66000005 | THERMAL OVERLOAD 3,7/5,5 A - 230 V 3 PH |

SPARE PARTS MPB AUT

ELECTRICAL BOX STANDARD ■



| POSITION | QUANTITY | CODE | DESCRIPTION |
|----------|----------|----------|---|
| 1 | 1 | 49200025 | PC BOARD |
| 2 | 1 | 53800051 | PLASTIC ELECTRICAL BOX (STANDARD) |
| 3 | 1 | 65050001 | CONTACTOR |
| 4 | 1 | 66000004 | THERMAL OVERLOAD 1,8/2,6 A - 400 V 3 PH |
| 4 | 1 | 66000005 | THERMAL OVERLOAD 3,7/5,5 A - 230 V 3 PH |